

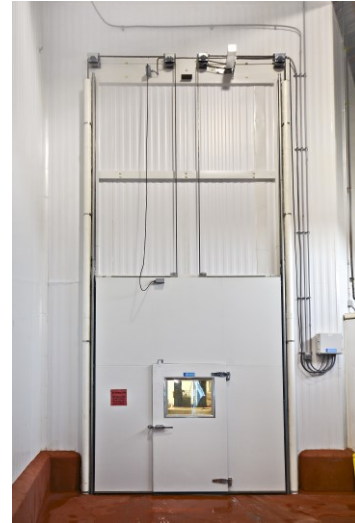
GLOBAL INSULATED DOORS INC.

Vertical Sliding Doors-Power
(V603TNE-Cooler, V603LWTE-Freezer)

Architect Data Sheet

Global Power Vertical Sliding Doors are an unbeatable design with an emergency safety mechanism.

**Available
Single Vertical Slide
Coolers / Freezer**



Cooler Door Specification:

Door - All Doors are made with Aluminum Extruded profile, NON-CFC Polyurethane insulations and clad with 24 GA White Stucco metal both sides of the door. Doors are available in 3” and 4” thickness and equipped with exterior and interior recessed pull handle, Skirt type floor sill gasket.

Insulation – 3” thick door – R 24 & 4” thick door – R 32

Power Door Feature – Operator voltage can be 115V to 575 V Single phase, 60 Hz. Dual-Speed Controller and Gear Motor run all power doors effortless. Controller enclosed in NEMA 4 Control panel. Controller has built in safety feature for reversing the door if any object comes across during closing cycle.

Frames –Standard headers and casings are clad with 24 GA White Stucco metal. Options are available for Wood or Plastic construction. Adjustable frame seals design gives extra flexibility for perfect sealing. Heavy duty 3 inch “J” track is corrosive resistant made of 12 GA galvanized steel.

Freezer Door Specification:

Freezer Doors has same above cooler specification and also has additional features as below.

Doors –Perimeter heat inside the door. Heater connection requires 120 V, 60 Hz, Single Phase AC line.

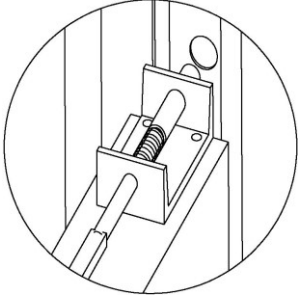
Insulation - 4” thick door – R 32 & 6” thick door – R 48

For blast freezer applications, additional heated seals options are available, please contact factory.

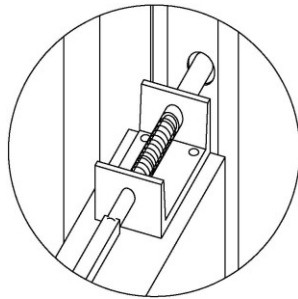
GLOBAL INSULATED DOORS INC.

Safety –

Vertical Door gets locked on track if any failure happens on counter weight. As shown in Figure – If any failure on Counter weight, Safety Pin will Release and Lock into “J” Track Safety hole.



Standard Mode



Safety Mode



Door Seal Adjustment –

- A reinforced Frame seals fills the gap between the door panel and the vertical casings, and the header.
- Adjustment of the seals can be done by placing the door in closed position, loosen seal attachment screw on seal(s) and can placed the seal at right position and tighten the screws back.

Available Options:

- Doors Metal - Stainless Steel / White -- Smooth / Stucco, FRP finish, Smooth painted white metal, Galvanized unpainted metal Smooth / Stucco
- Locking Device
- Pedestrian Pass Door
- Vision Panel - Heated and non heated
- Kick plates – Available in Aluminum Checker Plate, Stainless Steel, Galvanized
- Motion Detector
- Photocell Device
- Vehicle Loop Detector
- Additional Heated Seals

GLOBAL INSULATED DOORS INC.

To Operate Door Manually

- To operate **POWER Door MANUALLY**; disconnects Control System power supply. This will disconnect power to the Motor
- Operate Door **MANUALLY**
- Reconnect the power supply to switch back to Power operated door.

Installation

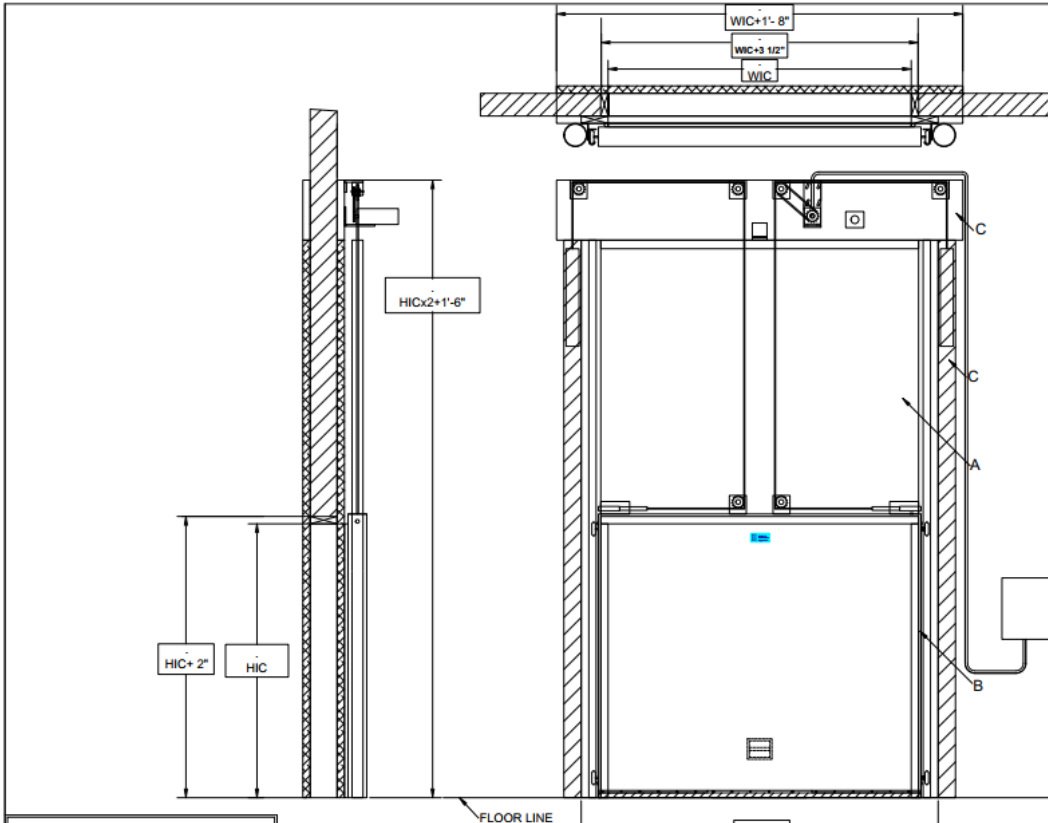
- The Casings & Header must be plumb and level. If the floor is not even shim casings to level
- Apply silicon to provide vapor seal between frames(header/casing) and wall
- Door bottom seal should slight crush to the floor. Floor seal adjustment can be done thru hanger bolts.

Vertical casing seals and top header seals are adjustable and can be adjusted for tight seal

- If Single door blade is wider than 8'0" than door blade could be of 2 piece construction (Spline) and assemble on site by customer.
- Freezer Doors required 120 V, 60 Hz Single phase AC Supply for Heater wires
- Apply operator voltage as requested. Wiring should be done by certified electrician. Once wiring is done test motor for few cycles.
- Detailed installation instructions are supplied with Door order.

GLOBAL INSULATED DOORS INC.

Shown Model V603TNE – Cooler, Vertical, Power Door
(Freezer Door will be with Heater Cable)



INSTALLATION REQUIREMENTS

- I. Floor under door must be level and smooth
- II. Wall behind header and casings must be smooth in a common plane.
- III. Mounting holes 3/4" diameter (drilled in field - by others).

DOOR PANEL AND FRAME MANUAL DOORS

- A. DOOR PANEL**
- 24 GA white stucco steel
 - 24GA white smooth steel
 - 24 GA 304 stucco stainless steel
 - OTHER:
- B. Extruded aluminum door frame.**
- C. CASINGS AND HEADER**
- Wood clad with:
 - Gray plastic clad with:
 - 24 GA white stucco steel
 - 24 GA white smooth steel
 - 24 GA 304 stucco stainless steel
 - OTHER:
- D. FREEZER DOOR (4" and 6" doors only)**
Heaters are standard equipment on all freezer doors - 110V connection required. (110V connections supplied in field - by others).

OPTIONS

- E. FASTENERS**
- Nylon bolts (frame drilled in field - by others)
 - OTHER:
- F. ADDITIONAL HEATED SEALS**
- G. INSIDE JAMBS**
- Wood clad with:
 - Gray plastic clad with:
 - 24 GA white stucco steel
 - 24 GA white smooth steel
 - 24 GA 304 2B stainless steel
 - OTHER:
- H. BACKFRAME**
- Wood clad with:
 - Gray plastic clad with:
 - 24 GA white stucco steel
 - 24 GA white smooth steel
 - 24 GA 304 stucco stainless steel
 - OTHER:
- I. KICKPLATES Trackside Wallside**
Height: 18" 24" 30" 48" OTHER:
 Aluminum diamond tread (1/8" thick)
 18 GA 304 2B stainless steel
 OTHER:
- J. LOCKING DEVICE - Hasp Type**
 TRACKSIDE WALLSIDE
 with emergency release
 no emergency release
- K. () VISION PANEL - 12" x 14" Insulate Heated**

OPERATING TEMPERATURE		
DOOR	TRACKSIDE	WALLSIDE
REQUIRED FOR PRODUCTION		

FOR:		P.O.#:		DATE:		DRAWN BY:		APPROVED BY:	
JOB:		F.O.#:		TAG:		CHECKED BY:		LAST REVISION:	
DOOR #	QTY	W. I. C. WIDTH IN CLEAR	H. I. C. HEIGHT IN CLEAR	DOOR TYPE	JAMB DEPTH				

**VERTICAL SLIDE
COLD STORAGE DOOR**
POWER *COOLER
Model V603TNE



Global Insulated Doors Inc.
633 Edgeley Boulevard, Unit-2
Concord, ON, L4K 4H6
Tel: 905-660-6668, Fax: 905-660-6669, Toll Free: 1-866-684-3667