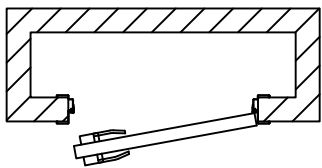
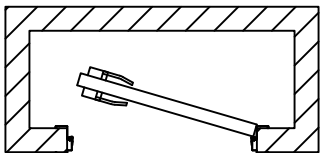


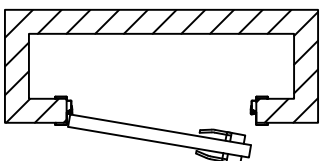
DOOR HAND(Top View)



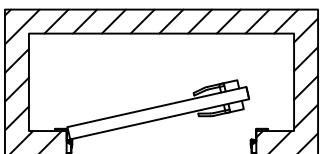
RIGHT HAND REVERSE



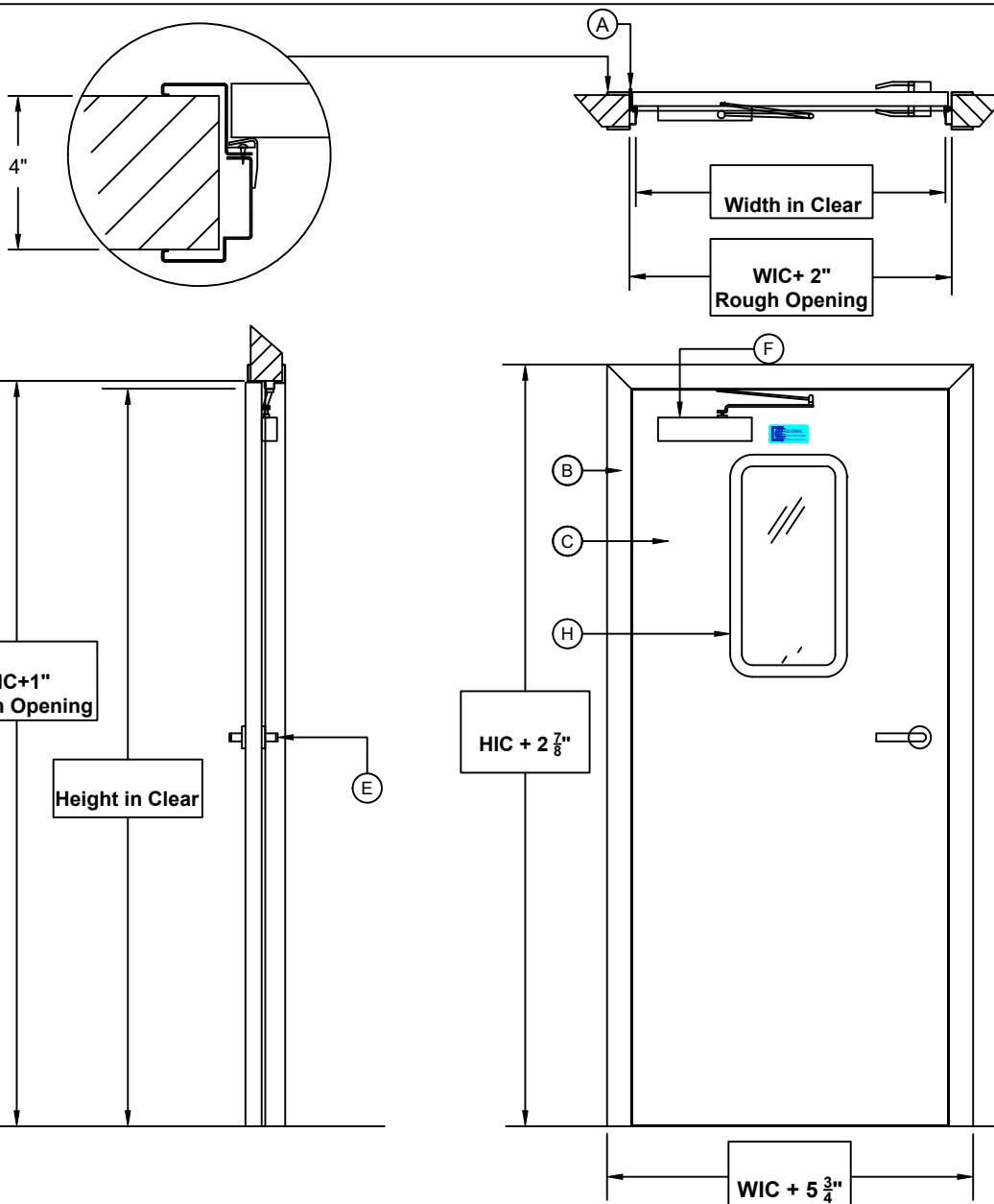
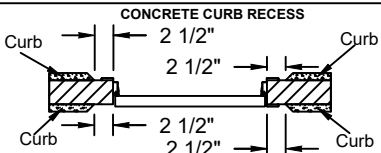
RIGHT HAND



LEFT HAND REVERSE



LEFT HAND



STANDARD DOOR

A. Butt Hinge Stainless Steel with 14Ga Reinforcements

B. FRAME - 18Ga 304 #4 Stainless Steel

C. DOOR BLADE

- White FRP
 - 24 GA White Metal
 - 24 GA 304 Stainless Steel
 - Other
- Stucco
 - Smooth

OPTIONS

D. PUSH PLATE - PULL HANDLE (Stainless Steel)

E. LEVER LATCH (Satin Chrome)

- Passage
 - Storeroom
 - Classroom
 - Entrance
 - Privacy
- KEY**
- Push Side
 - Pull Side

F. DOOR CLOSER

- Standard Dorex 1900
- LCN 1461
- Stainless Steel

G. PANIC PAD

- Aluminium
 - Stainless Steel
- Latch Set**
- Passage
 - Storeroom
 - Classroom

H. VISION PANEL - Thermal Double Pane

- 12" x 24"- (Standard)
- Other

I. KICKPLATES

- Pull Side
 - Push Side
- Height:** 12" 24" 36" 48"
- Aluminum diamond tread (1/8" thick)
 - 18 GA 304 #4 Stainless Steel
 - Other

J. DOOR BLADE SWEEP (Aluminium)

K. LOUVER

APPROVED BY: _____ DATE: _____ **Left Hand Shown**

FOR: _____ P.O: _____ DATE: _____
 JOB: _____ F.O: _____ TAG: _____



Door#	Qty	Width in Clear	Height in Clear	Door Thickness	Wall	Door Handle	Serial Number
				1 3/4"		Left Hand	

**SWING DOOR
 PERSONNEL DOOR
 SINGLE LEAF
 MODEL PS**