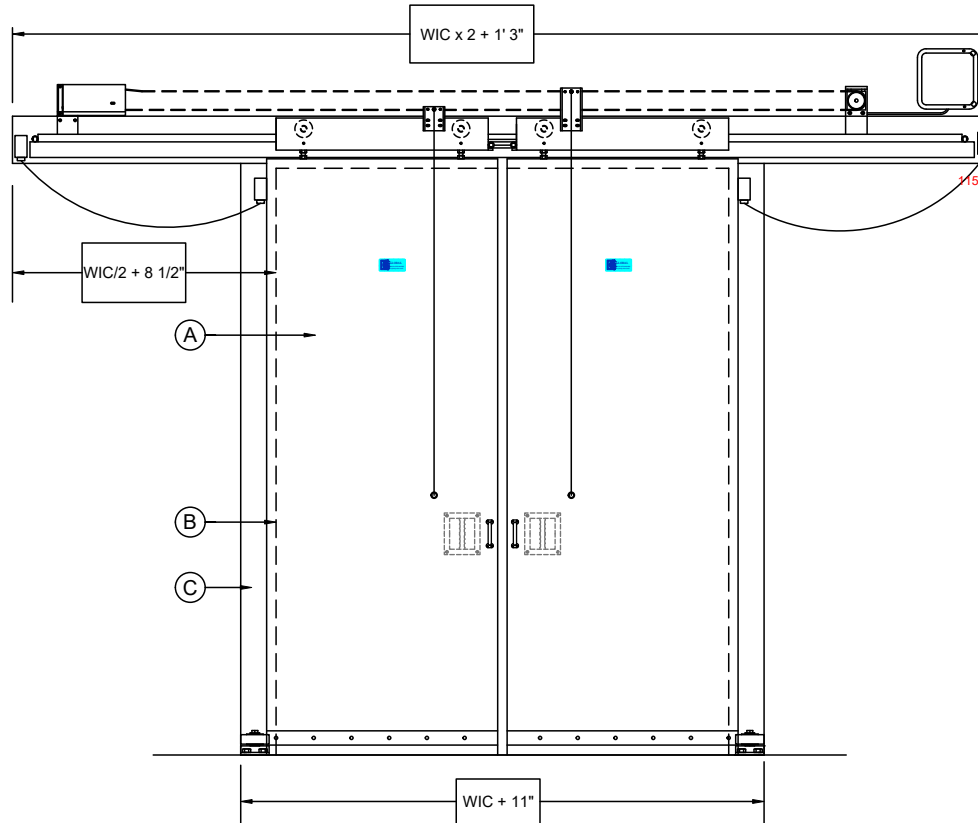
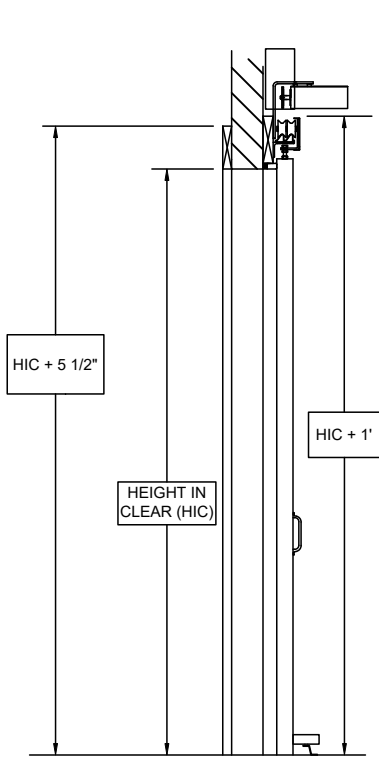
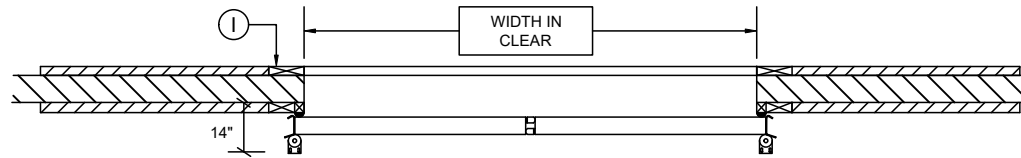


**NOTES**



**INSTALLATION REQUIREMENTS**

- I. Floor under door must be level and smooth.
- II. Wall behind header and casings must be smooth and on a common plane.
- III. Stayrollers installed in field - by others.

**POWER OPERATED DOORS**

- i. SINGLE PHASE INPUT VOLTAGE REQUIRED. (3 phase supply requires 1 capped leg). Motor and control box prewired at factory.
- ii. Safety reverse. Door will reverse to full open position and stop if object is struck while closing.

**DOOR PANEL AND FRAME**

**A. DOOR PANEL**

- 24 GA White metal
- 24 GA 304 Stainless Steel
- Other
- Stucco
- Smooth

**B. EXTRUDED ALUMINIUM DOOR FRAME**

**C. CASINGS AND HEADERS**  Wood  Plastic

- 24 GA White Metal
- 24 GA 304 Stainless Steel
- Other
- Stucco
- Smooth

**D. FASTENERS**  Galvanized  Stainless Steel

**E. TWO STANDARD PULL CORDS**

**OPTIONS**

**F.  FREEZER DOOR (4" and 6" Doors only)**

115V electric defrost system at four sides of gasket contact area. Separate 115V connection required in field - by others.

**G.  ADDITIONAL HEATED SEALS**

**H.  JAMBS**  Wood  Plastic

- 24 GA White Metal
- 24 GA 304 Stainless Steel
- Other
- Stucco
- Smooth

**I.  BACKFRAME**  Wood  Plastic

- 24 GA White Metal
- 24 GA 304 Stainless Steel
- Other
- Stucco
- Smooth

**J.  KICKPLATE**  Outside  Inside

- Height:  18"  24"  36"  48"
- Aluminum diamond thread
  - 18 GA 304 #4 stainless steel (smooth)
  - Other

**K.  LOCKING DEVICE**  TrackSide  Wallside

- With Power Cut off Emergency Release
- With Power Cut off no Emergency Release

**L.  VISION PANEL (24X24)**  Insulated  Heated

**M.  MOTION DETECTOR**  Open  Safety

**N.  P.O.M (Partial open mode)**

**O.  PHOTOCELL**  Open  Safety

**P.  PUSH BUTTONS**  Single  Double  Triple

in addition to pullcords  in lieu of pullcords

**Q.  RADIO CONTROLS (1 Reciever - 2 Transmitters)**

**R.  TIME DELAY CLOSE**

**S.  LOOP DETECTOR**  Open  Safety

**OPERATING TEMPERATURE**

DOOR	HINGE SIDE	WALL SIDE

REQUIRED FOR PRODUCTION

APPROVED BY: \_\_\_\_\_ DATE: \_\_\_\_\_

**IMPORTANT**

Factory may alter door construction and hardware from design illustrated. Factory will not exceed illustrated clearances.

Design drawings are for use to verify size, required clearances, and providing confirmation of options requested. Actual production design and components may vary but will not exceed illustrated clearances.

FOR:

P.O.:

DATE:

JOB:

F.O.:

TAG:

DOOR #	QTY	WIDTH IN CLEAR	HEIGHT IN CLEAR	DOOR TYPE	LOCK	OPERATOR VOLTAGE	JAMB	SLIDE	SERIAL NUMBER
				4" Freezer		Advise		Bi - Part	



**COLD STORAGE DOOR  
BI - PART SLIDING DOOR  
POWER 4" FREEZER  
MODEL 603LWTE**