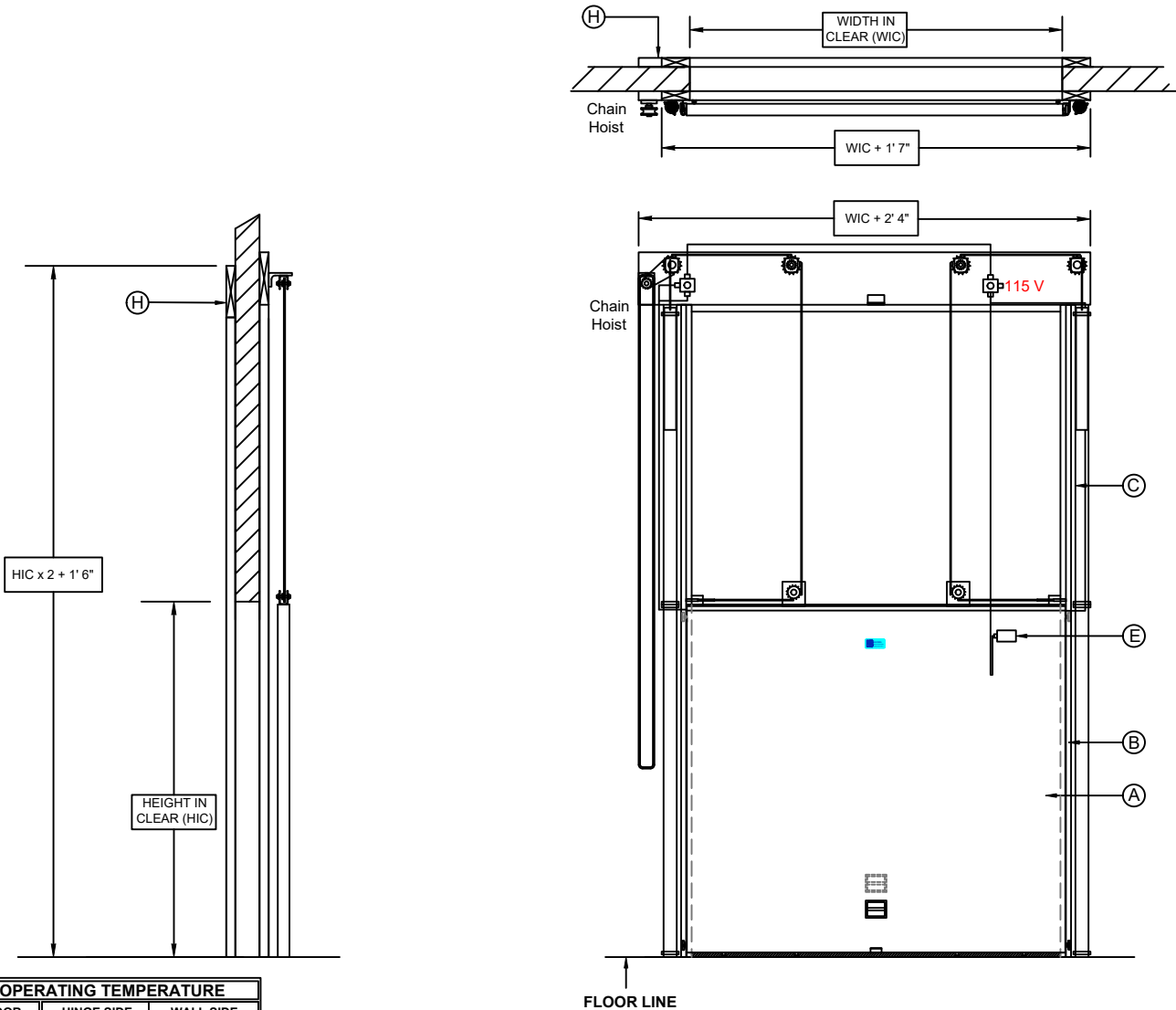


NOTES



OPERATING TEMPERATURE		
DOOR	HINGE SIDE	WALL SIDE
REQUIRED FOR PRODUCTION		

APPROVED BY: _____ DATE: _____

Design drawings are for use to verify size, required clearances, and providing confirmation of options requested. Actual production design and components may vary but will not exceed illustrated clearances.

IMPORTANT
Factory may alter door construction and hardware from design illustrated. Factory will not exceed illustrated clearances.

FOR: _____ P.O. # _____ DATE: _____
 JOB: _____ F.O. # _____ TAG: _____

Door #	Qty	Width In Clear	Height In Clear	Door Type	Jamb Depth	Slide	Serial Number
				4" Freezer		Vertical	



GLOBAL
INSULATED DOORS INC.
1-866-684-3667

COLD STORAGE DOOR
VERTICAL SLIDING DOOR
 MANUAL 4" FREEZER
MODEL 603LWT

INSTALLATION REQUIREMENTS

- I. Floor under door must be level and smooth
- II. Wall behind face frame must be smooth in a common plane.
- III. Mounting holes (drilled in field - by others).
- IV. Stayrollers installed in field by Others

DOOR PANEL AND FRAME MANUAL DOORS

- A. Door Panel**
- 24 GA White metal
 - 24 GA 304 Stainless Steel
 - Other
- Stucco
 Smooth
- B. Extruded Aluminium Door Frame**
- C. Casings & Headers** Plastic Wood
- 24 GA White Steel
 - 24 GA 304 Stainless Steel
 - Other
- Stucco
 Smooth
- D. Fastener** Galvanized Stainless Steel

OPTIONS

- E. Freezer Door (4" and 6" Doors Only)**
 115V electric defrost system at four sides of gasket contact area. Separate 115V connection required in field - by others.
- F. Additional Heated Seals**
- G. Jamb** Plastic Wood
- 24 GA White Steel
 - 24 GA 304 Stainless Steel
 - Other
- Stucco
 Smooth
- H. Backframe** Plastic Wood
- 24 GA White Steel
 - 24 GA 304 Stainless Steel
 - Other
- Stucco
 Smooth
- I. Kickplate** Trackside Wallside
- Height: 18" 24" 36" 48"
- Aluminum diamond thread
 - 18 GA 304 #4 Stainless Steel (smooth)
 - Other
- J. Locking Device** TrackSide Wallside
- With Emergency Release
 - With no Emergency Release
- K. Vision Panel**
- 24" x 24" Thermal Triple Pane
 - 24" x 24" Heated