

INSTALLATION REQUIREMENTS

- I. Floor under door must be level and smooth
- II. Wall behind header and casings must be smooth in a common plane.
- III. Mounting holes 3/4" diameter (drilled in field - by others).

DOOR PANEL AND FRAME MANUAL DOORS

A. DOOR PANEL

- 24 GA white stucco steel
- 24GA white smooth steel
- 24 GA 304 stucco stainless steel
- OTHER:

B. Extruded aluminum door frame.

C. CASINGS AND HEADER

- Wood clad with:
- Gray plastic clad with:

- 24 GA white stucco steel
- 24 GA white smooth steel
- 24 GA 304 stucco stainless steel
- OTHER:

- D. FREEZER DOOR (4" and 6" doors only)
Heaters are standard equipment on all freezer doors - 110V connection required.
(110V connections supplied in field - by others).

OPTIONS

E. FASTENERS

- Nylon bolts (frame drilled in field - by others)
- OTHER:

F. ADDITIONAL HEATED SEALS

G. INSIDE JAMBS

- Wood clad with:
- Gray plastic clad with:

- 24 GA white stucco steel
- 24 GA white smooth steel
- 24 GA 304 2B stainless steel
- OTHER:

H. BACKFRAME

- Wood clad with:
- Gray plastic clad with:

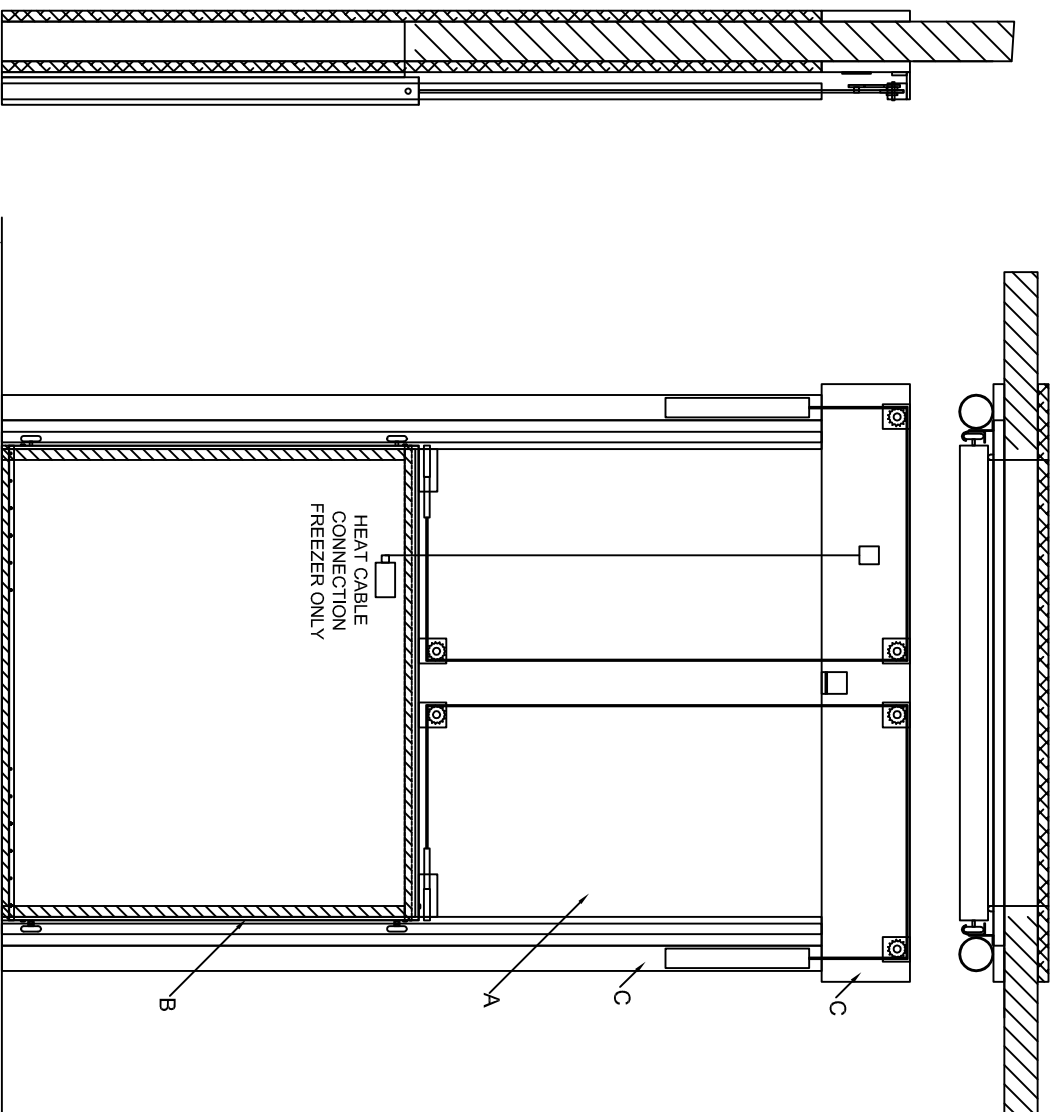
- 24 GA white stucco steel
- 24 GA white smooth steel
- 24 GA 304 stucco stainless steel
- OTHER:

- I. KICKPLATES Trackside Wallside
Height: 18" 24" 36" 48" OTHER:
 Aluminum diamond tread (1/8" thick)
 18 GA 304 2B stainless steel
- OTHER:

J. LOCKING DEVICE - Hasp Type

- TRACKSIDE WALLSIDE
- with emergency release
- no emergency release

- K. () VISION PANEL - 12" x 14" Insulated Heated



OPERATING TEMPERATURE	
DOOR	TRACKSIDE WALLSIDE

REQUIRED FOR PRODUCTION

FREEZER - MODEL V603LWT

FOR:		P.O.#:		DATE:		DRAWN BY:		APPROVED BY:	
JOB:		F.O.#:		TAG:		CHECKED BY:		LAST REVISION:	
DOOR #	QTY	W.I.C.	H.I.C.	DOOR TYPE	JAMB DEPTH	NO	SERIAL NUMBER		
		WIDTH IN CLEAR	HEIGHT IN CLEAR	Freezer					

VERTICAL SLIDE COLD STORAGE DOOR MANUAL Model V603LWT	
---	--



GLOBAL
Insulated Doors Inc.