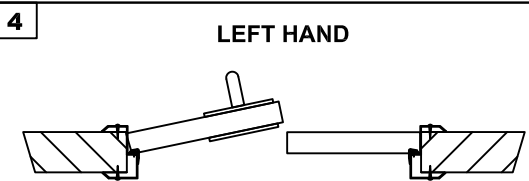
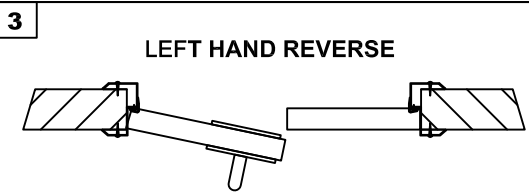
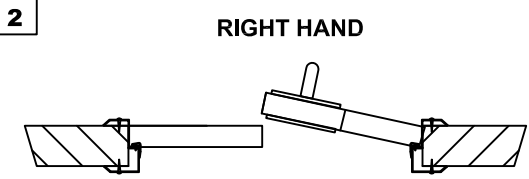
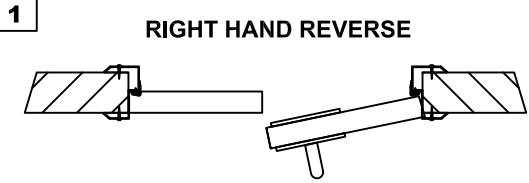
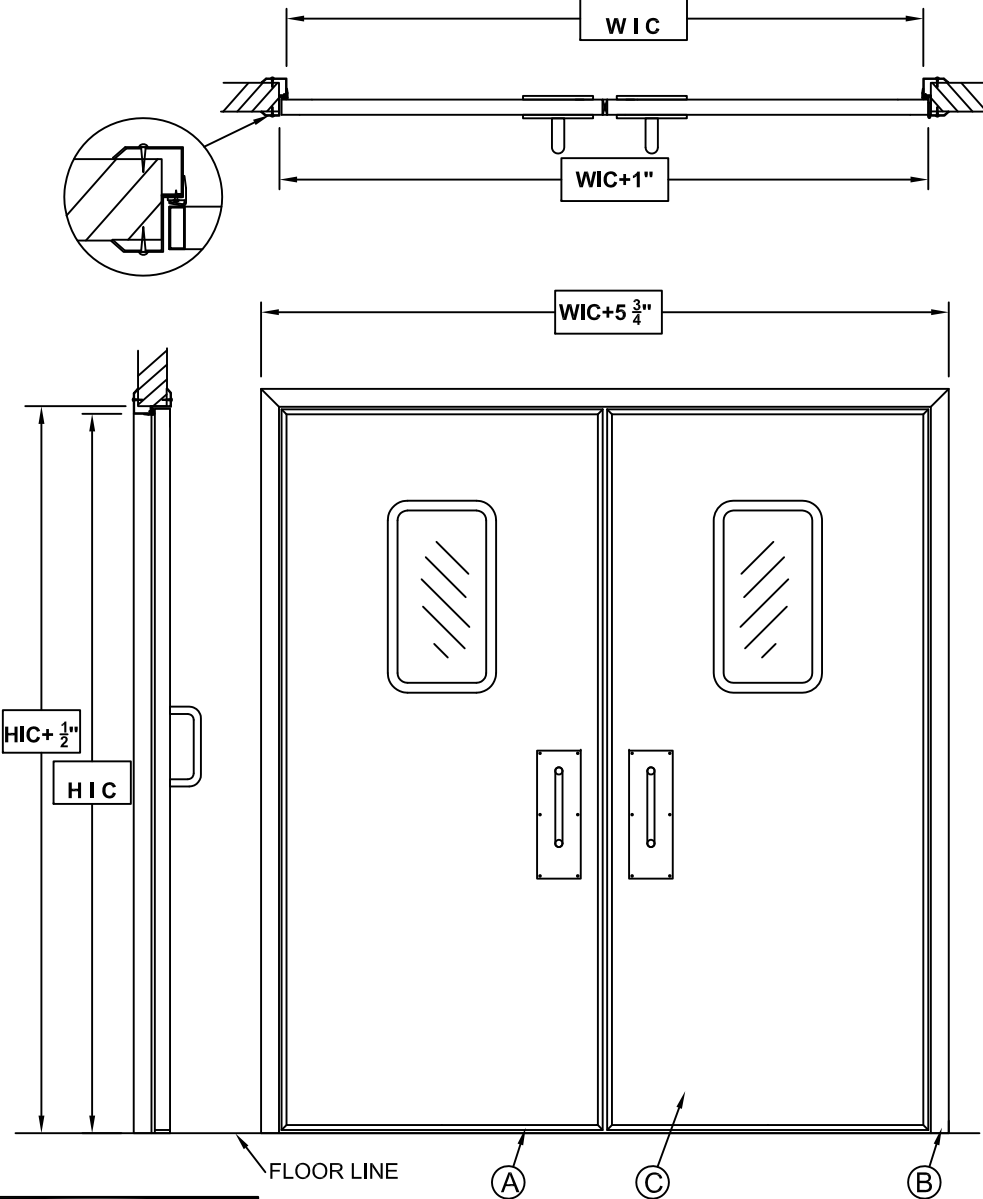
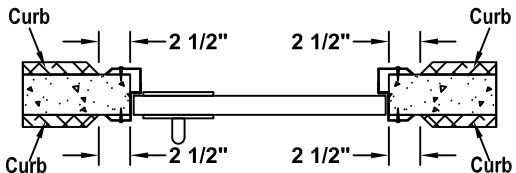


DOOR HAND



CONCRETE CURB RECESS



STANDARD DOOR

- A. DOOR BLADE FRAME -Extruded Aluminium
- B. FRAME - 16Ga 304 2B stainless steel
- C. DOOR PANEL
 - White stucco FRP
 - 24 GA white stucco steel
 - 24GA white smooth steel
 - 24 GA 304 2B stainless steel

OPTIONS

- D. Push handle - push plate
- E. Panic Bar
- F. Thumb Latch
- G. Louver
- H. Electric Strike
- I. Lever Lock
 - Passage
 - Storeroom
 - Entrance
 - Key Code
 - Privacy
- J. Window Lexan GPW
 - 8" x 24"
 - 12" x 24"- (Standard)
 - 16"x24"
- K. Door Closer
- L. KICKPLATES Inside Outside
 - Height: 18" 24" 36" 48" OTHER:
 - Aluminum diamond tread (1/8" thick)
 - 18 GA 304 2B stainless steel
 - OTHER:
- M. SPRING LATCH (Top of Inactive Leaf)
- N. CANE BOLT (Top of Inactive Leaf)

APPROVED BY: _____ DATE: _____

IMPORTANT:
Factory may alter door construction and hardware from design illustrated. Factory will not exceed illustrated clearances.

RIGHT HAND REVERSE SHOWN

FOR: . P.O. . DATE: .
JOB: . F.O.#: . TAG: .

DOOR #	QTY	WIDTH IN CLEAR	HEIGHT IN CLEAR	DOOR THICKNESS	DOOR HAND - SEE ABOVE	SERIAL NUMBER

DRAWN BY: _____ APPROVED BY: _____
CHECKED BY: _____ LAST REVISION: _____

SERVICE DOOR
PERSONNEL DOOR
DOUBLE 1 3/4" LEAF
MODEL PD

